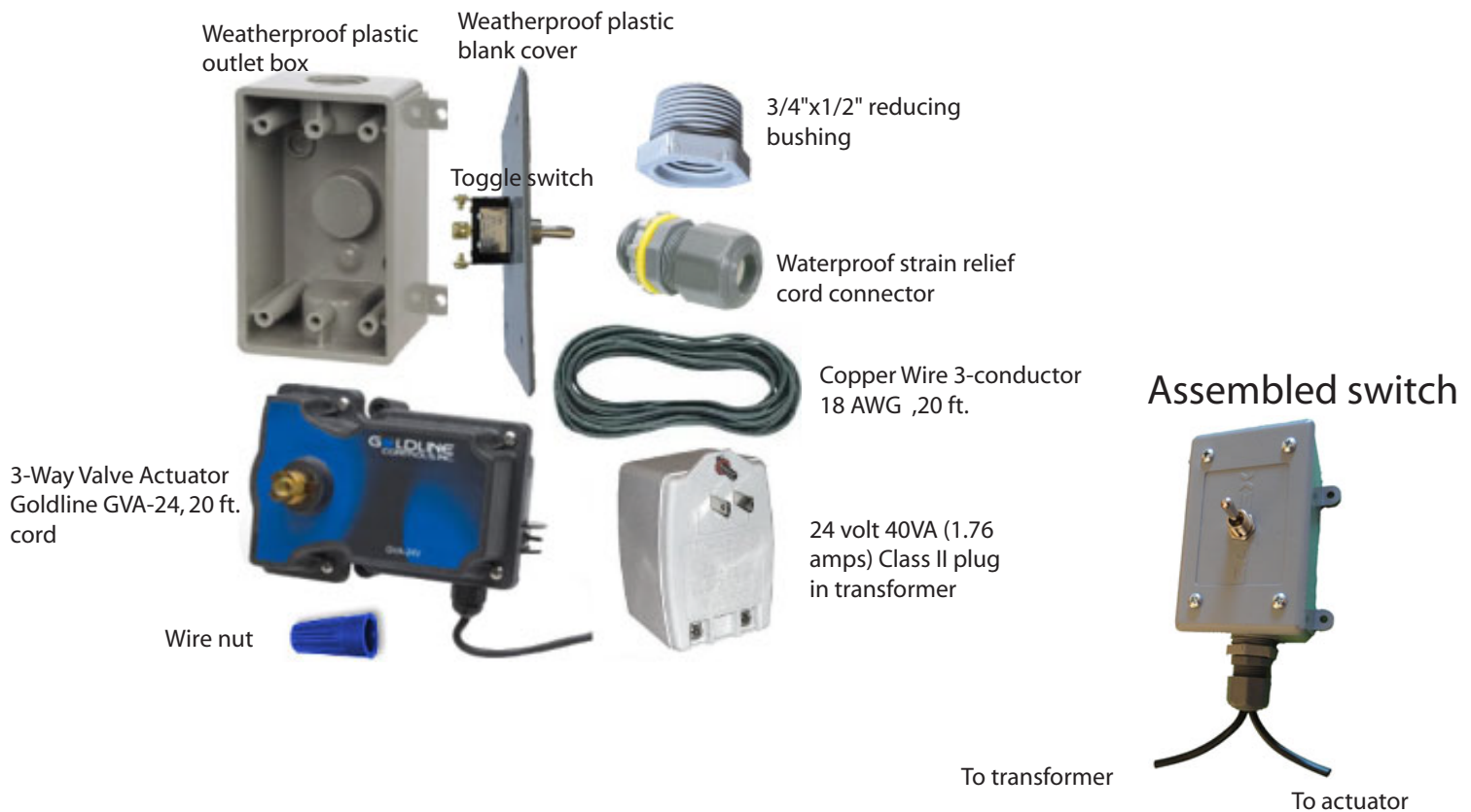


3-Way Valve Actuator Switch Kit

-parts included in kit-



3-Way Valve Actuator Goldline GVA-24:

Follow the manufacturers instructions to install the actuator onto the 3-way valve, adjust the cams and synchronizing the actuator.

Weatherproof plastic outlet box:

All electrical connections are made inside the outlet box. Refer to the next page for an example wiring diagram.

Weatherproof plastic blank cover

A 7/16" hole will need to be drilled in the cover so that the toggle switch can extend through it. If the toggle switch will have the optional weatherproof switch cover placed over it, the hole for the toggle switch should be drilled exactly in the center of the blank cover.

Toggle switch

The toggle switch has two "on" positions and an "off" center position. Each "on" position turns the actuator either clockwise or counterclockwise. Refer to the actuator manual on synchronizing the actuator so it turns in the correct direction without having to rewire the toggle switch. The switch can be left in any position without damage to the actuator.

3/4" x 1/2" reducing bushing:

Threads into the bottom of the outlet box

Waterproof strain relief cord connector

Threads into the 3/4" x 1/2" reducing bushing.

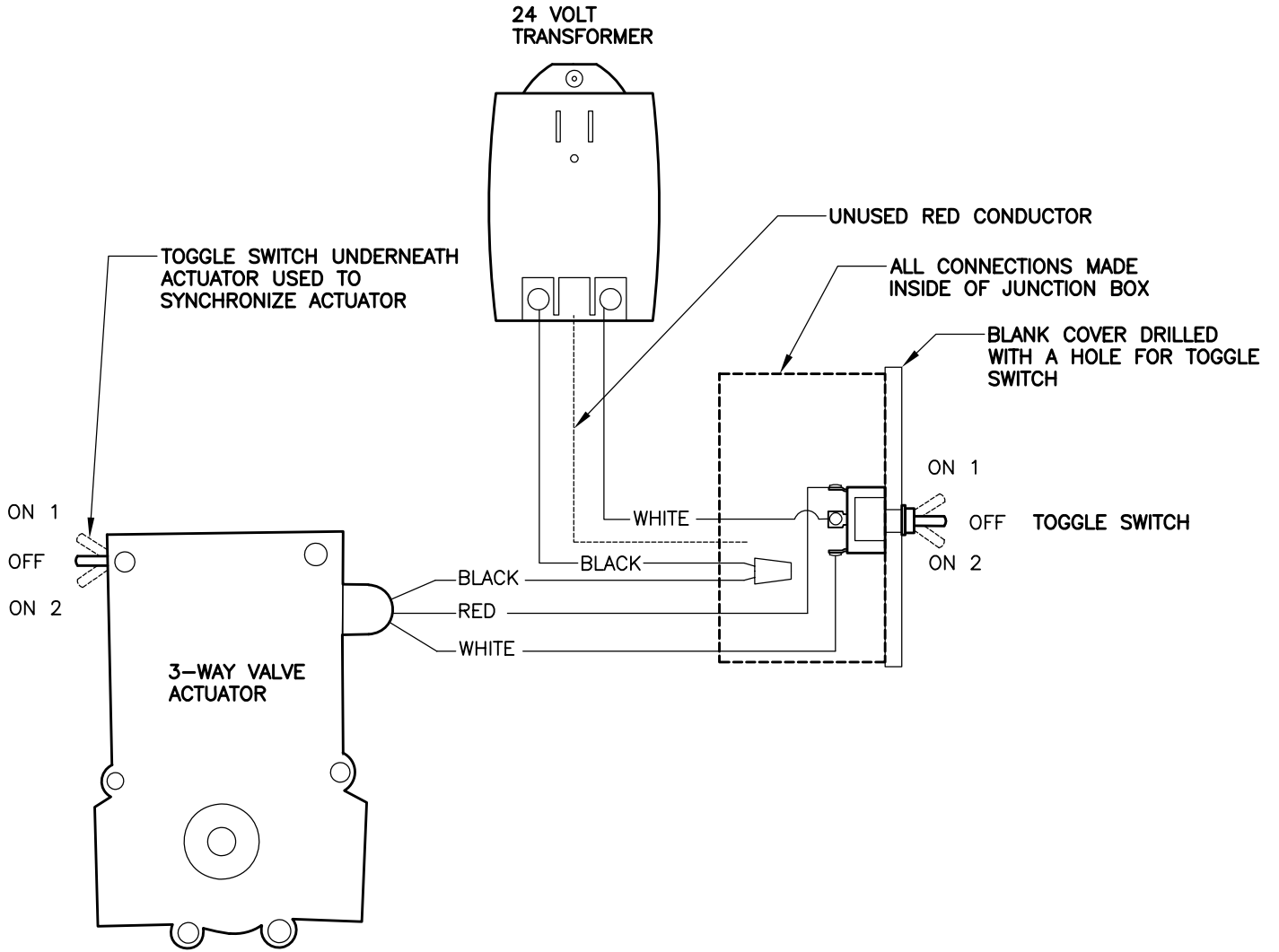
Copper Wire

Connects the transformer to the toggle switch and actuator

24 Volt Transformer

Supplies power to the actuator

EXAMPLE WIRING DIAGRAM



TOGGLE SWITCH POSITION	ACTUATOR SWITCH POSITION	ACTUATOR ROTATION DIRECTION
ON 1	ON 1	COUNTER CLOCKWISE
ON 1	ON 2	CLOCKWISE
ON 2	ON 1	CLOCKWISE
ON 2	ON 2	COUNTER CLOCKWISE

DISCLAIMER:
 THIS DRAWING AND THE INFORMATION CONTAINED HEREIN IS FOR
 GENERAL PRESENTATION PURPOSES ONLY. THE DRAWING IS NOT
 INTENDED FOR USE AS A CONSTRUCTION DOCUMENT..